

SVSMDVR Mobile Digital Video Recorders



Remote Control

View with SD/HDD storage directly attached to PC

Product Information

SVS is proud to introduce its line of Mobile Digital Video Recorders (MDVR) that delivers a mobile multi-source capturing solution in a convenient single DIN case. The SVS MDVR line features multiple recording storage options, thereby delivering great versatility and redundancy support as well as high quality H.264 codec compression for longer recording capacity and data integrity.

In addition to capturing up to 8 channels of video (depending on the model) and audio, all MDVR's record GPS coordinates, 3 axis sensor movements, vehicle speed, alarms, and vehicle ID to provide a holistic representation of vehicles in the field.

This feature packed line of MDVR's give the end-user the ability to customise alarms for conditions such video loss, hard drive full and 3 axis sensor thresholds to suit their application and company policies/compliance.

The MDVR 3G models have a built-in SIM slot for 3G networking via the windows compatible AP software that facilitate remote live access of the 3G MDVR. Furthermore, multi-level user passwords can be set-up to grant access to data search, alarm conditions/alerts, changing settings, control of PTZ compatible devices attached to the unit as well as data log file downloading and recording.

To ensure the recorded data on the MDVR's are secure from unauthorised access, the included AP software, once installed, is the only way of viewing the encrypted data directly from the SD or hard drive as well as remote access for 3G models.

The SVS range of MDVR's has been designed for configuration and set-up from a central point, then deployed to a vehicle in the field for installation or replacement. Once installed, the MDVR's do not need a monitor attached for normal operation and recording thus reducing fit out costs and limiting modifications required in the cabin.

Features

- **Up to 8 camera inputs (model dependant)**
- **Multiple recording storage types**
- **GPS receiver**
- **3 axis sensor**
- **Customisable alarms**
- **Secure Data: Password data access and encrypted files**
- **Unlimited vehicle fleet management and remote access of 3G models**

Products Available:

Part Number

1	4 Camera input with GPS	SVSMDVR4
2	8 Camera input with GPS	SVSMDVR8
3	4 Camera input with GPS and 3G	SVSMDVR43G
4	8 Camera input with GPS and 3G	SVSMDVR83G

*HDD and SD card not included in all 4 models but available as options

**AP Software
included**





MDVR GUI Screen Display



Vehicle ID - display on screen & recording

On screen display (OSD) - Date/Time/HDD capacity/Recording resolution/System status (easy to control icons)

Image & Date log file recording - GPS/G-Sensor/Driving Speed/Alarm Event...all of vehicle's driving status

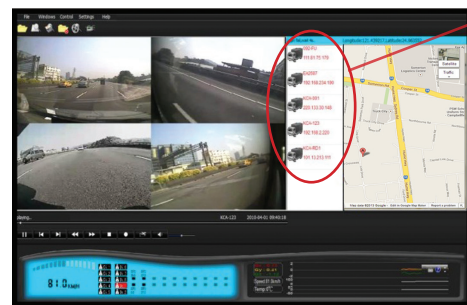
Authority password protection - "User" & "HDD Format"

Multi-language: Chinese/English/Japanese/Spanish/Russian/French...

AP Software GUI



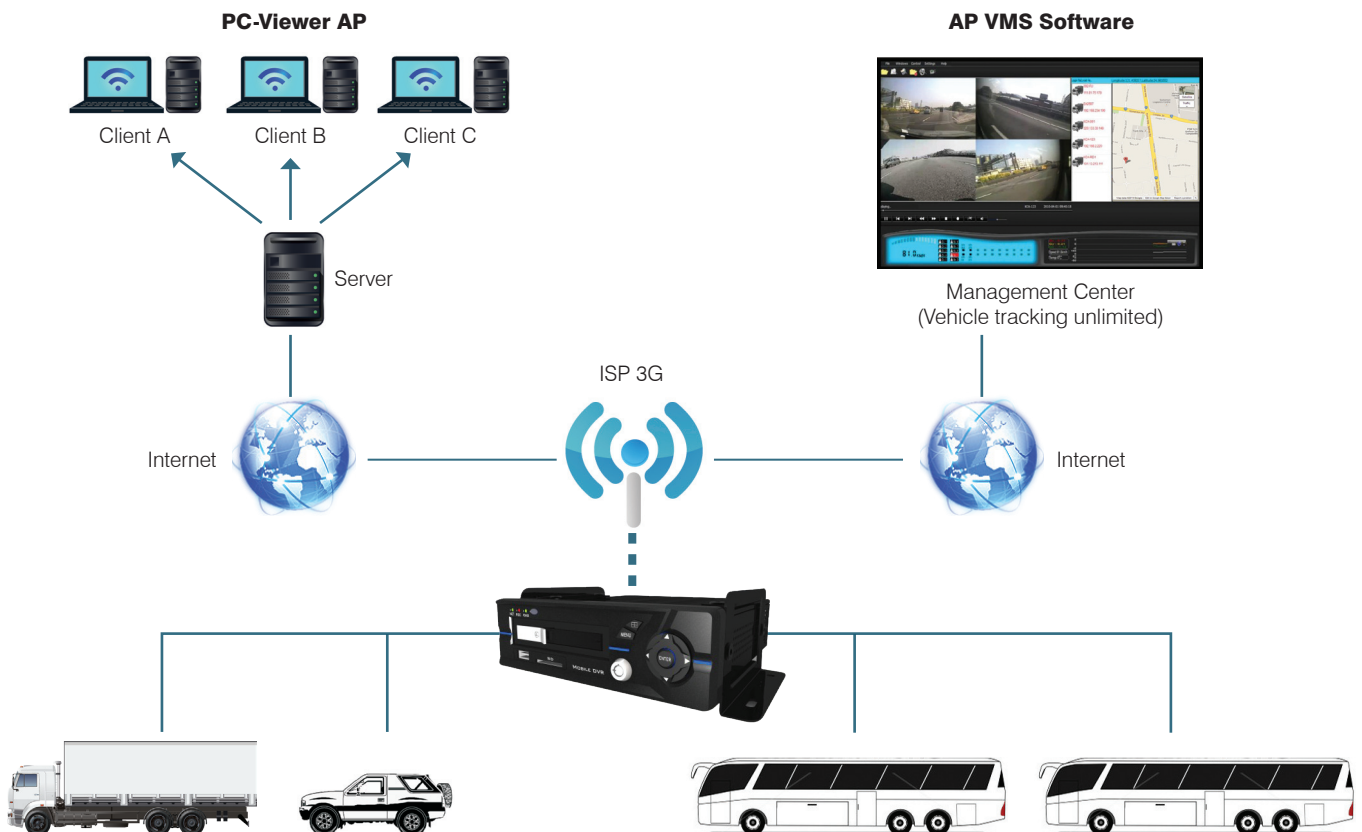
View with SD/HDD storage directly attached to PC



Select and manage unlimited 3G devices in the field

Remote access view (3G models only)

3G Vehicle Management System





Specifications

Model	4 Camera input SVSMDVR4	8 Camera input SVSMDVR8	4 Camera input 3G SVSMDVR43G	8 Camera input 3G SVSMDVR83G
Compression	H.264			
System On Chip (SOC)	Faraday Platform			
System	NTSC/PAL Auto Detection			
Video Input	BNC x4	BNC x8	BNC x4	BNC x8
Disaplay Rate	NTSC: 720 x 480 ; PAL: 720 x 576			
Recording	D1: NTSC 720x480/ PAL:720x576	HD1: NTSC 720x240/PAL: 720x288	D1: NTSC 720x480/ PAL:720x576	HD1: NTSC 720x240/PAL: 720x288
Recording Rate	NTSC: 120fps (30fps/CH) PAL: 100fps (25fps/CH)	NTSC:240fps (30fps/CH) PAL: 200fps (25fps/CH)	NTSC: 120fps (30fps/CH) PAL: 100fps (25fps/CH)	NTSC:240fps (30fps/CH) PAL: 200fps (25fps/CH)
Video Output	Composite RCA for Main monitor out x 1			
Audio Input	RCA x 1 (Multi-channel audio customisation)			
Audio Output	RCA x 1			
Audio Sampling Rate	22.05Kbps	16Kbps	22.05Kbps	16Kbps
Display Type	Full / QUAD	Full / QUAD / 9 SPLIT	Full / QUAD	Full / QUAD / 9 SPLIT
Storage*	2.5" SATA HDD x 1 (or SSD HDD) ; SD card x 1 — Max 32GB			
Backup	USB FLASH storage backup			
Firmware Upgrade	Upgrade using USB storage			
Record Quality	Super / High / Normal / Low			
Record Mode	Always recording, Automatic SD recording with HDD failure			
Playback Speed	Forward x2, x4, x8, x16, x32, x64 / Rewind x2, x4, x8, x16, x32, x64			
Playback Mode	Time Search / Event List / Quick Search			
Event Type	Power On / Power Off / Video Loss / Alarm in out / HDD Format			
RTC	Battery Built-in (Parking time: Keep, 720/360/180/90/60/30/5/1 min.)			
Alarm/Relay	8 Alarm in / 2 Relay out (Trigger time setting — Keep, 60～5min.)			
Alarm Function	Full screen pop / Beep / Relay out			
RS-485	Yes			
3G Network	Not available		Built-in SIM Slot	
On Screen Display (OSD) Interface	GUI (Graphic User Interface) Image Control Interface			
Remote View/Control	Not Available	Not Available	3G Network	3G Network
GPS	GPS Built in / Time calibration function			
G-sensor	G-sensor Built in (12 position) / Sample rate 30Hz			
PTZ Protocol	Support PELCO-P/PELCO-D			
Display Settings	Channel / Car Number / Time / Speed / Temperature / Record status			
Camera Settings	Brightness / Huge / Contrast / Saturation Adjustable			
Authority Protect	Data Privacy / Protection User Password / HDD Format Password			
Vehicle Identification	8 word car identification setting for record and display			
Language	English / Chinese / Spanish / French / Japanese / Russian...Customisation			
Dimensions/Weight	183mm(L) x 160mm(W) x 50mm(H) ; 1.5kgs			
Power Supply	9～36VDC ; Power On/Off control by ignition			
FAN	Fan built in with rotation rate	Fan power control (Temperature)	Fan built in with rotation rate	Fan power control (Temperature)
Power Out	12V DC 1.5A control by Accessories/Ignition power			
Power Consumption	10W			
Operation Temperature	MDVR: -35℃ ～ +70℃ (Compatible HDD optional - Heat tolerance grade)			